

For each figure:

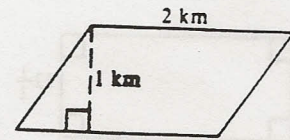
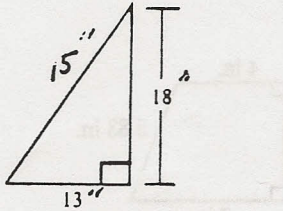
1. Identify its shape.

2. Calculate the perimeter.

3. Calculate the area.

**Make sure to use the proper units**

**If you are unable to calculate due to missing information, identify the type of missing information.**



7. Figure

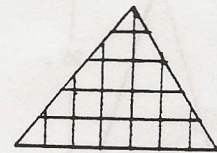
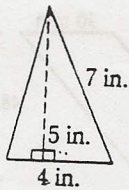
Perimeter

Area

8. Figure

Perimeter

Area



Figure

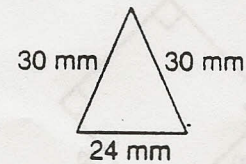
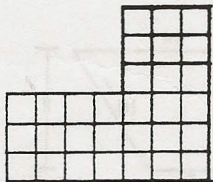
Perimeter

Area

10. Figure

Perimeter

Area



11. Figure

Perimeter

Area

12. Figure

Perimeter

Area