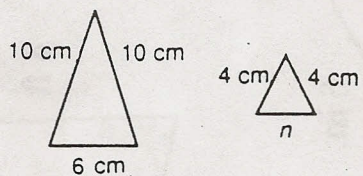
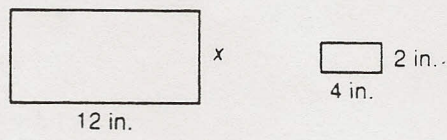


The figures are similar. Write a proportion to solve for the unknown value (s).

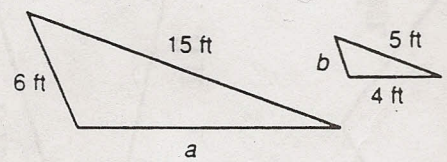
1.



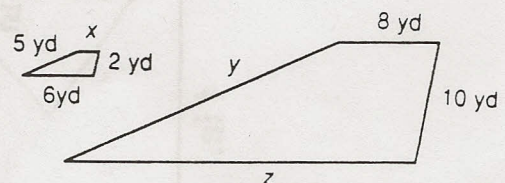
2.



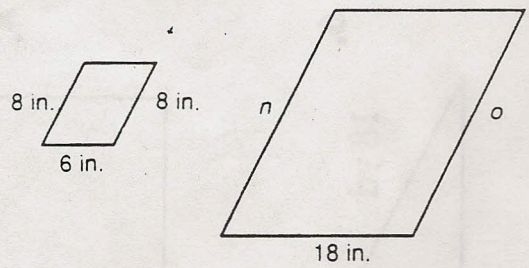
3.



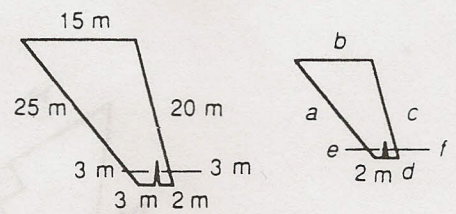
4.



5.



6.



Solve.

7. Jenna wants to take a rectangular pattern from a magazine and transfer it, enlarged, to her cloth. The magazine rectangle is 5 in. wide and 7 in. long. Her pattern must be 15 in. wide. How long will Jenna's larger rectangle be?

8. Find the unit cost of a 25-lb bag of cat litter that sells for \$3.59.

